

# RESIDENTIAL RESTORATION

## **NAPA COUNTY**

KATHERINE NOVICK, NATIVE VALLEY LANDSCAPE DESIGN & CNPS BOARD MEMBER

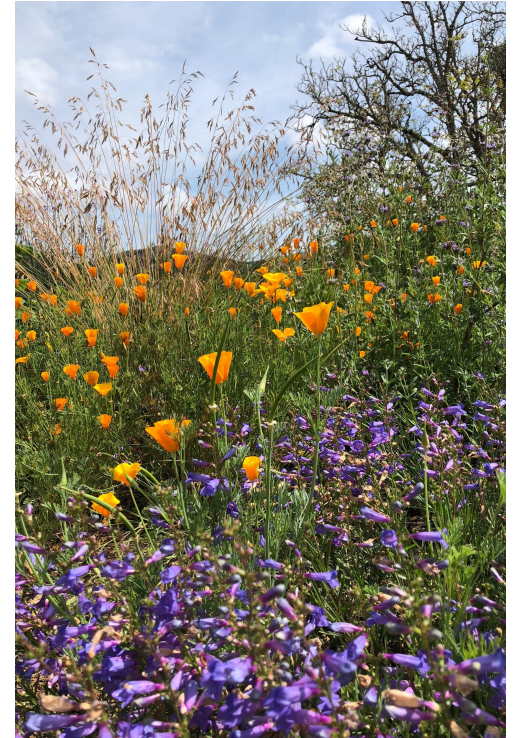
# WHY HOMEOWNERS SHOULD REMOVE INVASIVE PLANTS

1. FIRE SAFETY: INVASIVES CREATE THICKETS OF BRUSH THAT CAN PROVIDE FUEL IN FIRE EVENTS
2. CREATES OPPORTUNITY TO BUILD HABITAT AND BIOLOGICAL DIVERSITY ON YOUR PROPERTY
3. RELIEVES MAINTENANCE CHALLENGES (ONCE PROPERLY REMOVED)
4. HELPS MAINTAIN THE HEALTH OF EXISTING TREES THAT MAKE A PROPERTY REALLY SPECIAL
5. HELPS SUPPORT NEIGHBORING ECOSYSTEMS BY NOT CONTRIBUTING MORE INVASIVE SEED/RHIZOMES TO THE AREA



# RESIDENTIAL RESTORATION STRATEGY

1. IDENTIFY ALL INVASIVES ON SITE
2. PREPARE REMOVAL STRATEGY BASED ON SPECIES TYPE
3. SHEET MULCH REMOVAL AREA WITH CARDBOARD AND WOOD CHIPS
4. REPLANT WITH APPROPRIATE NATIVE SPECIES
5. MONITOR ( FOR YEARS)
6. CONTINUE TO REMOVE INVASIVES THAT PERSIST, AND NEW ONES THAT MOVE IN (MONITOR AND MAINTAIN)
7. TALK TO NEIGHBORS ABOUT INVASIVES ON THEIR PROPERTY, AND ATTEMPT TO WORK WITH THEM ON THEIR REMOVAL STRATEGY



# COMMON INVASIVES ON A RESIDENTIAL PROPERTY

WILDLAND INTERFACE	ORNAMENTAL LANDSCAPE
Acacia dealbata, Silver Wattle	Buddleja davidii, Butterfly Bush
Centaurea calcitrapa, Purple Star Thistle	Cortaderia ssp., Pampas Grass
Genista monspessulana, French Broom	Delawarea odorata, Cape Ivy
Centaurea solstitialis, Yellow Starthistle	Hedera helix, English Ivy
Eucalyptus spp.	Pyracantha angustifolia, Narrowleaf Firethorn
Euphorbia oblongata, Spurge	Stipa tenuissima, Mexican Feather Grass
Ligustrum lucidum, Glossy Privet	Vinca major, Periwinkle
Rubus armeniacus, Himalayan Blackberry	Zantedeschia aethiopica, Calla Lily

# NATIVE PLANT BENEFITS

1. SUPPORT BIODIVERSITY AND MAN'S CAPACITY TO LIVE ON THIS PLANET
2. RESTORE AND PROTECT DISTURBED LAND, CREATING HEALTHIER ENVIRONMENTS FOR HUMANS AND ALL WILD LIFE
3. PROVIDE HABITAT AND FOOD FOR NATIVE BEES, BUTTERFLIES, BIRDS, REPTILES AND MAMMALS
4. REQUIRE LESS WATER, LESS MAINTENANCE, NO CHEMICAL FERTILIZERS
5. OFFER MEDICINAL AND FOOD SOURCES FOR HUMANS AND WILDLIFE
6. KEEP US CONNECTED TO THE OPEN, UNDISTURBED LAND AROUND US WHICH IS RARE AND PRECIOUS

LEARN MORE AT CALIFORNIA NATIVE PLANT SOCIETY [WWW.CNPS.ORG](http://WWW.CNPS.ORG)



## RIPARIAN WOODLAND RESTORATION PALETTE



*Carex barbarae*, Valley Sedge



*Aesculus californica*, Buckeye



*Artemisia douglasiana*, Mugwort



*Rosa californica*, Wildrose



*Heteromeles arbutifolia*, Toyon



*Epilobium canum*, Cal Fuchsia



*Muhlenbergia rigens*, Deer Grass



*Cercis occidentalis*, Western Redbud

## RIPARIAN WOODLAND RESTORATION PLANTING, IN FIRST YEAR



# RESOURCES

## BOOKS

Designing California Native Gardens, Keator and Middlebrook

California Native Plants for the Garden, Bornstein, Fross, O'Brien

Foraging California, Judith Larner Lowry

Bringing Nature Home, Doug Tallamy

A New Garden Ethic, Benjamin Vogt

**LEARN MORE ABOUT NATIVE PLANTS AT CALIFORNIA NATIVE PLANT SOCIETY [WWW.CNPS.ORG](http://WWW.CNPS.ORG)**

**FIND NATIVE PLANTS LOCAL TO YOU AT [CALSCAPE](#)**

**HANDS ON LEARNING AT THE MARTHA WALKER NATIVE HABITAT GARDEN [WWW.NAPAVALLEYCNPS.ORG](http://WWW.NAPAVALLEYCNPS.ORG)**



THANK YOU!

Katherine Novick

Native Valley Landscape Design

[www.nativevalleydesign.com](http://www.nativevalleydesign.com)

[katherine@nativevalleydesign.com](mailto:katherine@nativevalleydesign.com)

413-657-3608

